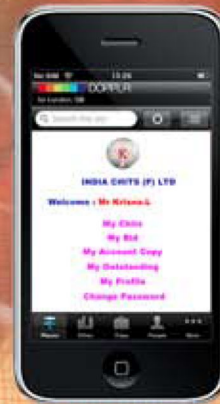


CHITCARE

Web-based ERP Application – Revolutionizing the way it happens.

First of its kind



- Comprehensive Software Solution for Chit fund Management
- Transparency to Subscriber - leads to Confidence
- Latest Technology & State of the Art Solution
- Customer Login (from web / mobile)
- Online Auctions
- Online info of any branch / customer
- Online Collections / T.R. Entry through mobile
- Easy Deployment, Maintenance & Highly Secure
- Automated Email Reports & SMS integration
- Online Payment Option (through credit card)
- From the creators of CHITCARE having 2,000+ chitfund customers



CHITCARE

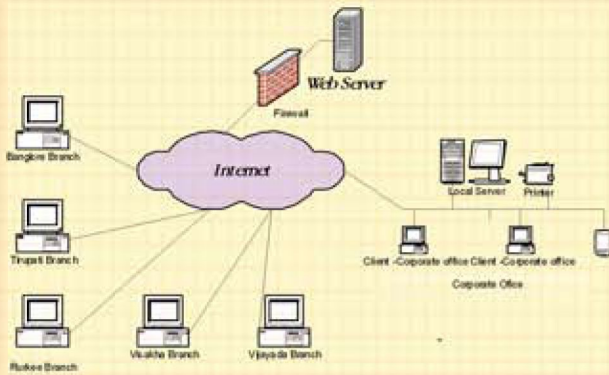
Web-based ERP Application

Comprehensive solution for chitfunds with latest technology

Chitcare Web-based ERP Application is First of its kind, with state of the art technology and features; it helps chitfund to be more transparent and efficient.

CHITCARE Web-based ERP Application is a new generation software solution, which offers great flexibility, transparency, complete control, and yet very easy to use. It comes with latest technology, which offers provision for direct interaction to customers, Online Auctions, SMS integration, Mobile connectivity.

CHITCARE ERP totally synchronizes the data of branches online and reports across branches can be generated instantly. Defaulters list, Guarantors information, Subscriber-wise ledger, Agent-wise Business, Automatic Intimation Card Generation, Balance Sheet, and Profit & Loss Statement etc. can be generated at any point of time. All these will lead to effective usage of technology, quality and accuracy in information and image among subscribers.



• Customer Login (from web / mobile)

Chit Member can login to application either from website or even from their mobile phone. Like the new generation banking system, user name & password details are issued to chit member on enrolment and they can use this info to view about their account.



• Easy Deployment & Maintenance

Application deployment and maintenance is very easy and Kireetisoft will take care of all maintenance related issues, which means, you can concentrate on your business and there is no need of computer experts to manage networks or databases.

• Highly secure



CHITCARE ERP is highly secure and offers complete control on the application and its data. Application & data will be stored in safest servers with Firewall protection and connected through T1 lines to assure faster speed and high safety. Its IP specific login provides complete control on each user. Even enabling / disabling the users can be done in a single click. Its automated

• SMS integration



CHITCARE ERP comes with completely integrated solution for SMS communication to customers, agents and staff members. Various SMSs like Receipt, Auction data, outstanding info, new groups info etc. are directly linked and system sends SMS automatically.

• Automated Email Reports & SMS

It comes with pre-defined Services to send E-mail with outstanding info or collection data automatically every day morning. Consolidated branch wise collection summary information is received through SMS every day morning.

• Self Chits Management

As CHITCARE ERP operates on Persons concepts, it is very easy to synchronize all the data of any member and gives complete control on all self chits. Even customer can also view all his chits through his login.

• Guarantor Management

CHITCARE ERP comes with various tools to manage guarantors and to keep track of direct or in-direct liability of each guarantor. It leads to complete control on all

• Online Payment Option (through credit card)



It is once again a new approach in collection and gives great ease for customers, who reside in other states or countries. They can directly pay using their credit card.

• No Hardware setup Required

As it is Web-based application, there is no huge network or servers required to use the application. Any system with internet connectivity is enough to use this solution, which gives great leverage in investment and saves money and time.

About Kireetisoft:

Kireetisoft has proven its expertise in providing Web-based ERP solutions for various fields including non-banking Financial Companies, Pharma, Education, Manufacturing, Retail, customer relation management, Asset management, Payroll, and so on. The company also has rich experience in chit fund domain through its most successful package Chitcare, which is being used by more than 2,000 chit fund companies across India.

Call and ask for demo to believe yourself



Plot No : 124, ARK Chambers, Kavuri Hills Phase1,
Jubilee Hills, Hyderabad - 500033, Telangana, India.

Phone : 040 41422422(50 lines),
+91 9849086644, +91 9866127725

Website : www.kireetisoft.com Email - support@kireetisoft.com

Guntur - +91 8632237800

Vijayawada - 0866-2545822
+91 8985817304

Vizag - 0891-6651073

Bangalore - +91 9866127725

• Transparency to Subscriber - leads to confidence

New technology based solution allows customers to interact with chitfund company directly, like the way, they interact with new generation banks. Chit member can login and view his transactions and he can also participate in online auctions, apart from SMS

• Latest Technology & State of the Art Solution

We now present the latest technology to enhance the power of chitfund companies to take them to more closer to their counterparts i.e., customers, agents, collection staff. This application is developed using .Net framework with SQL Server as database. While core modules work on browsers, customer modules can be used even on mobile phones. It also provides smooth synchronization with SMS communication. Overall, it is a technically strong solution to enhance the chitfund business.

• Online Auctions

Online Auction is a new era in chitfund industry. Instead of conducting auctions with limited members, who visit office, this system opens up the process and all members can participate in auctions directly from their home. This systems leads to better dividends to all customers and in turn enhances confidence of customers.

• Branches consolidation – on the fly

No more data transfers, no more time consuming processes. Every thing is online and the moment, a receipt is entered in any branch, it gets updated automatically even at central office reporting. All the reports of all branches also can be taken

• Control branches from anywhere

Chitcare web application provides great comfort in handling branches directly from head office. It is possible to provide required options only to branch staff and it is possible to control important transactions from head office.

• Online info of any branch / customer

CHITCARE ERP is complete online application and it provides quick and complete information about any branch or group or customer reports instantly from anywhere.

• Online Collections / T.R. Entry through mobile / other collection unit

Collection Executives can use mobiles phones to enter collection details through Temporary Receipts. Once a T.R. is entered, it automatically updates at the Server and it sends automated SMS to customer. It leads to confidence to customer and management will have immediate info about the executive collection data and their performance.



• Manage Chitfund from anywhere

Using the secured passwords, management can login to this ERP application from anywhere and continue to manage the business in a smooth manner.

CHITCARE

Web-based ERP Application

Features & Reports:

Masters

Members

- Chit Group Entry
- Member Registration
- Enrolment
- Self Chits

Guarantors

- Guarantor Registration
- Court Details

Agents

- Agent Registration
- Agent Opening Balance

Accounts

- Account Group Entry
- Accounts
- Cost Category
- Cost Center
- Standard Narration
- Transaction Types
- Account Budget
- Account Tree

Suite File

- Court
- Vehicles
- Staff Creation
- Advocate
- Suit Cause
- Vehicles Allotment
- Analysis Parameters
- Hand Over To Legal Dept
- Suit File Info

Transactions

Members

- Member Receipts
- General Receipts For Cash
- Payments to Sub. Ref.(Not Comm. Groups)
- General Receipts For Bank
- Received Cheques
- Issued Cheques
- Bid Offer Letters
- Auctions
- Member Removal
- Member Transfer
- Payments to Removal Members
- Sub. Ref. (Not Commenced Groups)
- Bid Payments
- Bad Debts & Credits Declaration
- Bid Advance
- Credit Balance Return
- Penalties
- Re-allotment
- Bid Adjustment

Members

- Surety Forms Issues
- Surety Forms Submission
- Surety Forms Approval
- Chit Pledge Information
- Pledge Release
- Surety Release

Agents

- Agent Commission Bill Preparation
- Agent Commission Payment
- Agent Commission Payment (OPENING)
- Agent Advance Payments
- Agent Adjust Payments
- Agent Commission Return

Accounts

- Cash Receipts
- Cash payments
- Petty Cash Receipts
- Petty Cash payments
- Bank Deposits
- Bank Payments
- Debit Note
- Credit Note
- Journal Voucher
- Memo - Journal Voucher
- Memo - Cash Receipts
- Memo - Cash payments
- Memo - Bank Deposits
- Memo - Bank Payments
- Memo - Debit Note
- Memo - Credit Note
- Vehicle Vouchers

Suite File

- Suit Filed Expenses
- Court Dairy Particulars
- Decree Details
- E.P. Declaration
- E.P. Attachments
- E.P. Closing
- Suit Filed Settlement
- Suit Filed Receipt

Security

Roles & Users

- Roles creation
- Role Permissions
- Users creation

Utilities

- Company Setup
- Branches
- Accounts Posting
- Service Packs

- Database Backups
- Re. Adj. Credit Installments
- Cancel Member Receipt
- Footers
- Configure Footers
- Wrong Postings

Reports

Enrollments

- Persons Register
- Daily Enrollments Register
- Enrolment Register
- Business Statement
- Allotment Register
- Member Account Copy
- Before Commencement Payment Position
- Daily Summary
- Collection Agent wise Members List
- Transfer Members List
- Area wise Members List
- Route wise Members List
- Vacant Chits

Collections

- Daily Collection (D.C.R)
- Day To Day Collection Register
- Collection Register
- Collection Agent wise
- Monthly Collection Analysis
- Cheque Collection
- GroupWise Collection Statement
- T.R. Book Wise Collection Register
- O.B.C. Collection Of Our Branch At Other Branches
- O.B.C. Collections Of Other Branches At Our Branch
- Area Wise Collection
- Route Wise Collection
- D.C.R. Summary
- Daily Collection Adj. Register

Auctions

- Bid Offer details
- Dividend Statement
- Monthly Minutes Register
- Turnover Statement
- Company Investment Statement
- Bids Register-II
- SB List for Month
- Auction Chart
- Group wise Dividend List
- Bids Register-I
- I Card Generation
- Newly Commenced Auction Turnover
- Terminated Auction Turnover
- F.D.R. Release Statement
- Minutes Filing Register
- GroupWise Dividend List
- Vacant Chits

CHITCARE

Web-based ERP Application

Features & Reports:

Out Standings

- GroupWise Outstanding
- Collection Agent Wise Outstanding
- Group Wise Outstanding (Month wise)
- Town Wise
- Business Agent Wise
- Agent Wise Outstanding
- N.P.S. Outstanding
- Area wise Outstanding
- N.P.S. Defaulters List
- P.S. Defaulters List
- Month wise Dues Statement
- P.S. Outstanding
- S.B. Outstanding
- S.F. Outstanding
- Route Wise Outstanding
- Defaulter List Installment Range

Notices

- First Auction Letter
- No Auction Letter
- Open Auction Letter
- Year Ending Notice
- Cheque Return Letter
- N.P.R.L.
- P.R.L.
- G.P.R.L.
- N.M.R.
- Final Remainder Notice
- Legal Notice
- Specimen - B
- Specimen - A
- Telegram
- Notices Issued Register
- Notices Issued Summary

- No of Cases Decreed Statement
- No of EP's Filed Statement
- Full & Part Recovery of Suit Filed Statement
- Legal Daily Report
- Suit Filed Proceedings
- Decree But Not Yet Filed E.P's
- E.P. Proceedings
- Cheque Dishonored Cases

Accounts

- Balance Sheet
- Vertical Balance Sheet
- P&L Account Date Range
- P&L Account Detailed
- Trial Balance Tree
- Profit and Loss Account
- Trial Balance Detailed
- Cash & Bank flow Statement
- Daily Business N Financial Information
- Trial Balance
- Petty Cash Ledger
- Day Book (4-Column)
- Accounts Ledger (Group)
- Accounts Ledger
- Day Book
- Cash Book
- Petty Cash Book
- Bank Book
- Receipt Register
- Payment Register
- Journal Register
- Debtors List
- Creditors List
- Bills Receivable
- Cash Flow
- Bank Flow
- Bills payable Ageing
- Interest Calculating
- Bank Reconciliation Statement

Cheques

- Cheques Clearing Statement
- Cheque Return Statement
- On Hand Cheque Statement
- Cheque Deposits Statement
- Bank Wise D.C.R. Register

Agents

- Agent Commission Payable Register
- TDS Statement
- Agent Commission Payment Register
- Agent Commission and Tax Deduction
- GroupWise Agent Commission
- Agent Ledger
- Agent Wise Enroll Register
- Agent Ledger Detailed
- Agent Ledger Summary

Adjustments

- B.P. Adjustment Register
- Bid Advance Adjustment Register
- Agent Commission Adj. Register
- Transfer Adjustments Register
- Suit File Adjustment Register
- Removal Adjustments Register

Consolidation

- Group Wise Consolidation Report
- Group Wise Consolidation for NPS
- Group Wise Consolidation For SB
- Group Wise Consolidation For PS
- Group Wise Consolidation For SF
- Group wise Collection
- S.B. Wise Collection
- S.F. Wise Collection
- N.P.S. Wise Collection
- P.S. Wise Collection
- Day To Day Collection
- Group wise Recovery Analysis
- Newly Commenced Auction Turn Over
- Terminated Auction Turn Over

Removal Members

- Removal Members List
- Removal Member Account Copy
- Refundable
- Re-Allotment Register
- Removal Subscription Refund Register

Suit File

- Legal Position Statement
- No of Suit Filed Statement

Enquiry Reports

- Branch Enquiry
- Group Enquiry
- Person Enquiry
- Receipt Enquiry
- Member Account Copy

Consolidation Reports Schedules

..... and many more.



Plot No : 124, ARK Chambers,
Kavuri Hills Phase1,
Jubilee Hills, Hyderabad - 500033,
Telangana, India.
Phone : 040 41422422 (50 lines),
+91 9849086644, +91 9866127725

Website : www.kireetisoft.com
Email - support@kireetisoft.com